

ACLON LAT212A software instruction

一. Normal use

1. **Turn blue potentiometer**, from the eight group memory mode choose you need code. Code 0 and 4; 1 and 5; 2 and 6; 3 and 7 model are same,

They are different is low pass and high pass frequency are different.

Code 0 and 4 is the most width

Code 3 and 7 is the most narrow



2. **Connect the power cord cable.** Active speakers use should be at 170 v to 265 v voltage range. or use should be at 90 v to 125 v voltage range. If overload this scope, will protect power amplifier.

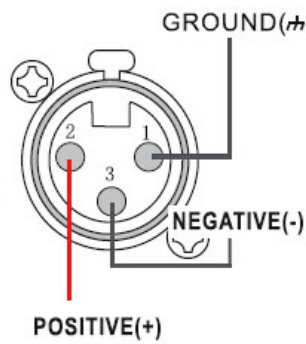
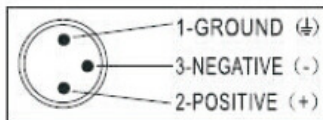




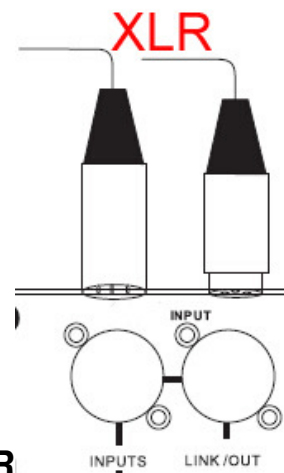
USB change to RS485 net cable.



Power cable



XLR



3. The signal lines XLR connected. Signal lines must balance the connection, (XLR 2 pin+ for positive, 3pin- for negative, 1 pin for ground), if wrong connect will cause noise.

4. Notice: When use active speaker if signal too strong the “**RED indicator**” will bright. Red indicator only can bring for second. If it bright long time that mean signal was compressed, the power and dynamic is insufficient.

二、 the DSP pattern Set or changes.

User can adjust frequency response curve, but **must be do by experienced sound engineer.**

User0 to user3 can change you want parameter.

Pre4 to pre 7 it is factory pattern cannot change.

When mix up the parameter, you can set to pre4 it is factory standard parameter.

User part can adjust: **full range** main channel low pass and high pass, delay, phase and bass compensation. Also can adjust timbre, frequency and six group equalizer parameter.



File Help

COM: COM3 Device ID: 1 Broadcast Mode Connect OK

Set device id: 1 Load: Usr0 Save: Usr0 Load Save

search device id search result save one group to PC load one group to device save 8-group to PC load 8-group to DV

PARAMETRIC EQUALIZATION

Filter	Frequency	Q Value	Gain	Type	Bypass
1	51.1	1	0	PEQ	<input type="checkbox"/>
2	99.2	1	0	PEQ	<input type="checkbox"/>
3	397	1	0	PEQ	<input type="checkbox"/>
4	972	1	0	PEQ	<input type="checkbox"/>
5	4757	1	0	PEQ	<input type="checkbox"/>
6	16000	1	0	PEQ	<input type="checkbox"/>

Filters reset recoup

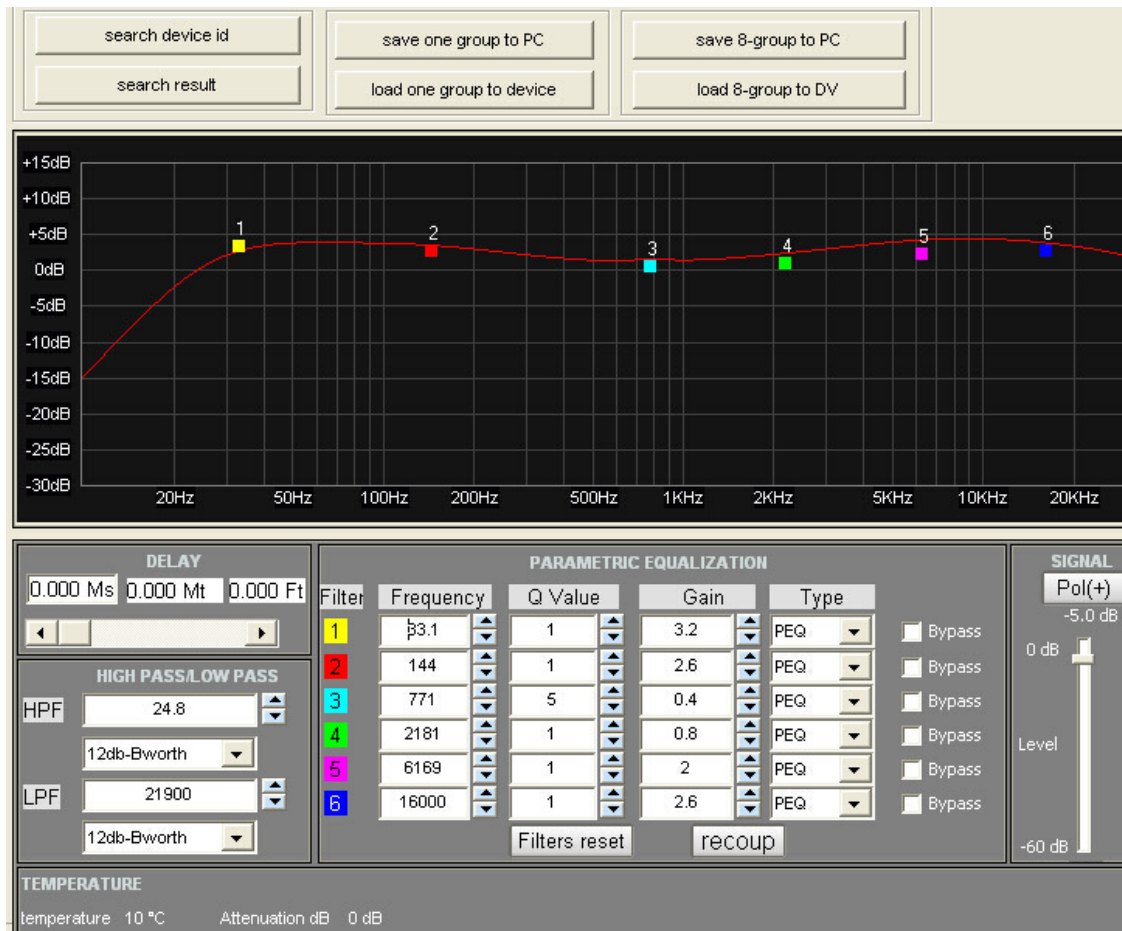
DELAY: 0.000 Ms 0.000 Mt 0.000 Ft

HIGH PASS/LOW PASS: HPF 19.7 12db-Bworth LPF 21900 12db-Bworth

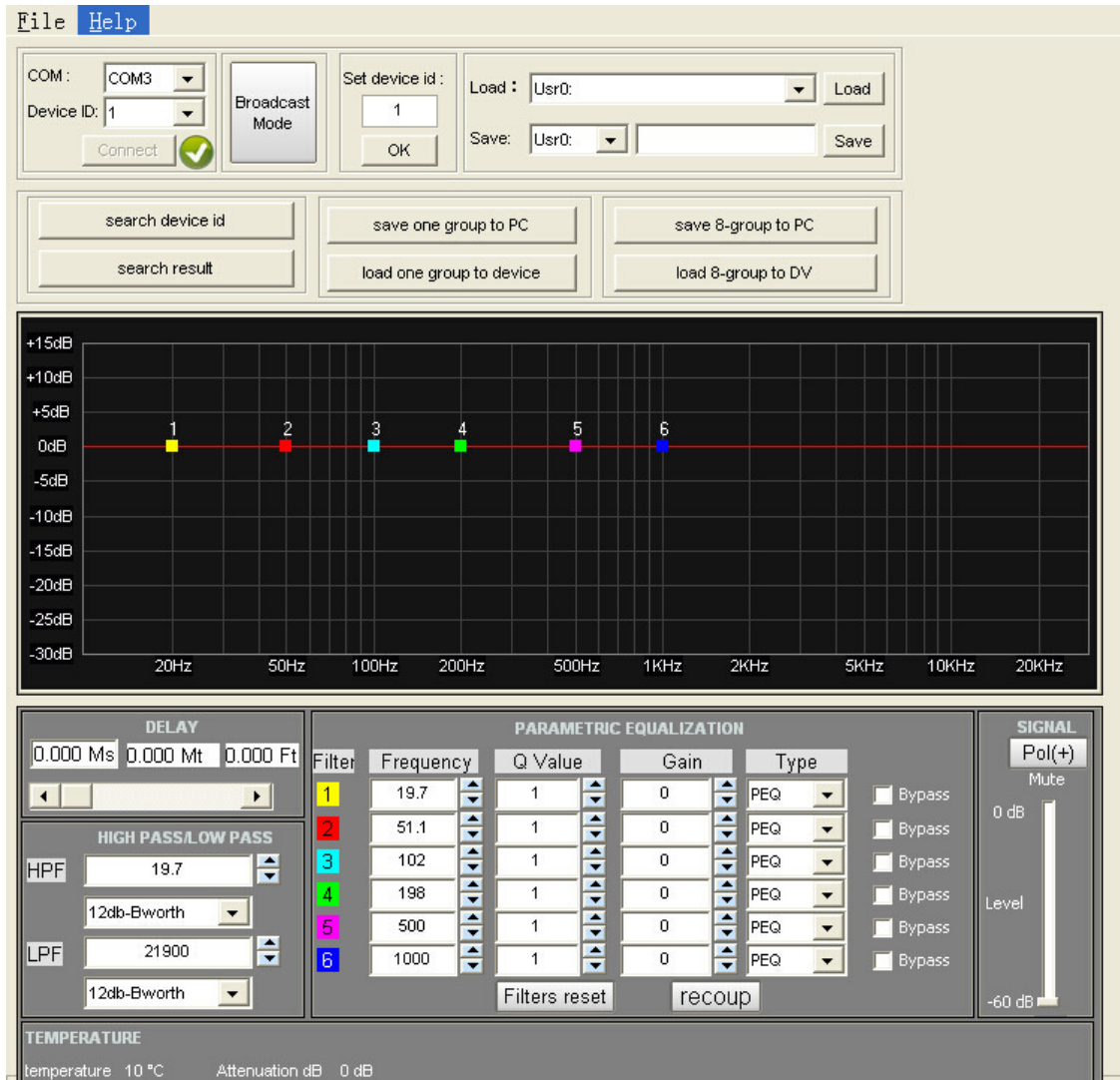
TEMPERATURE: temperature 10 °C Attenuation dB 0 dB

SIGNAL: Pol(+) -5.0 dB Level 0 dB -60 dB

Standards By pass



Can adjust to you need sound effect.



三、 Adjustment equalizer

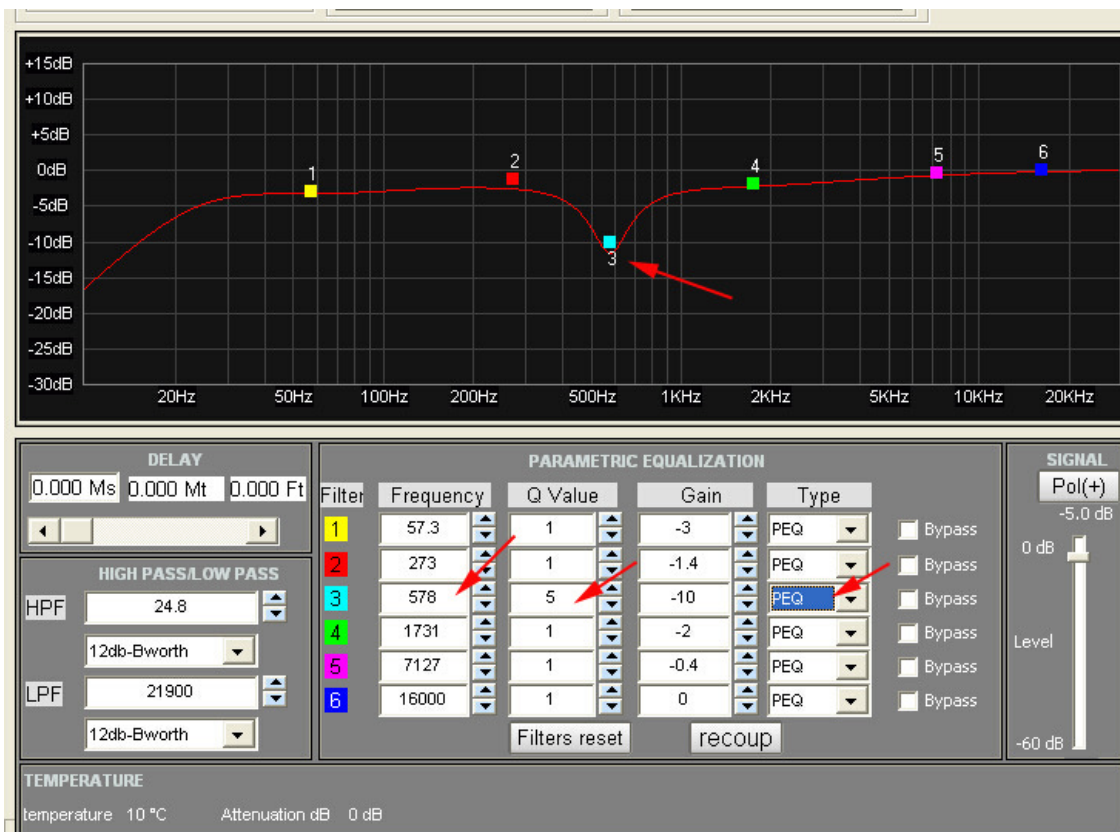
1. choose type

PEQ types, frequency can adjust increase or decrease; Usually use PEQ

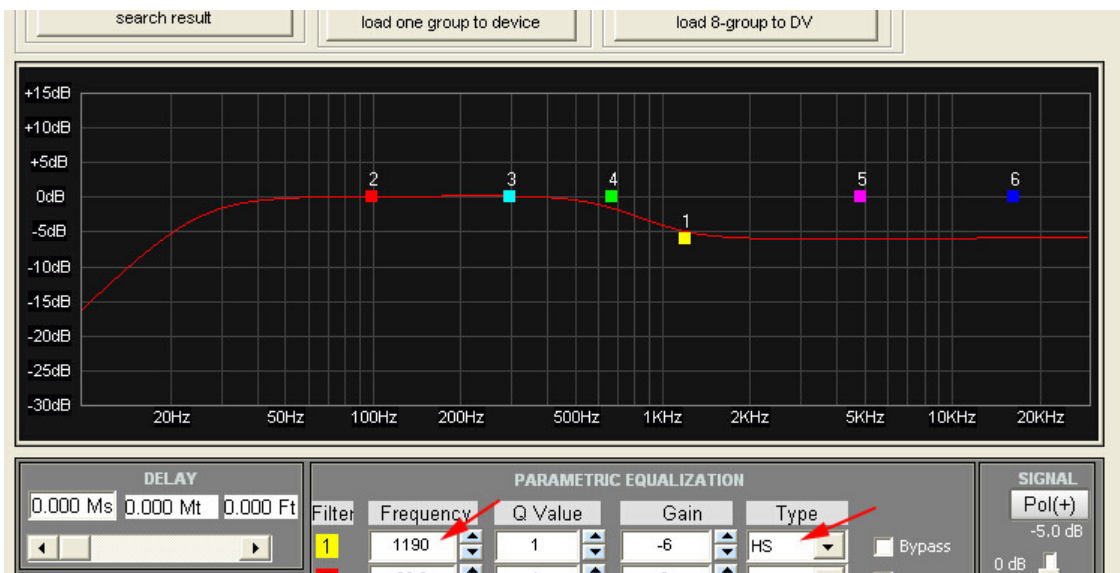
LS type, low pass frequency is adjustable

HS type, high frequency is adjustable

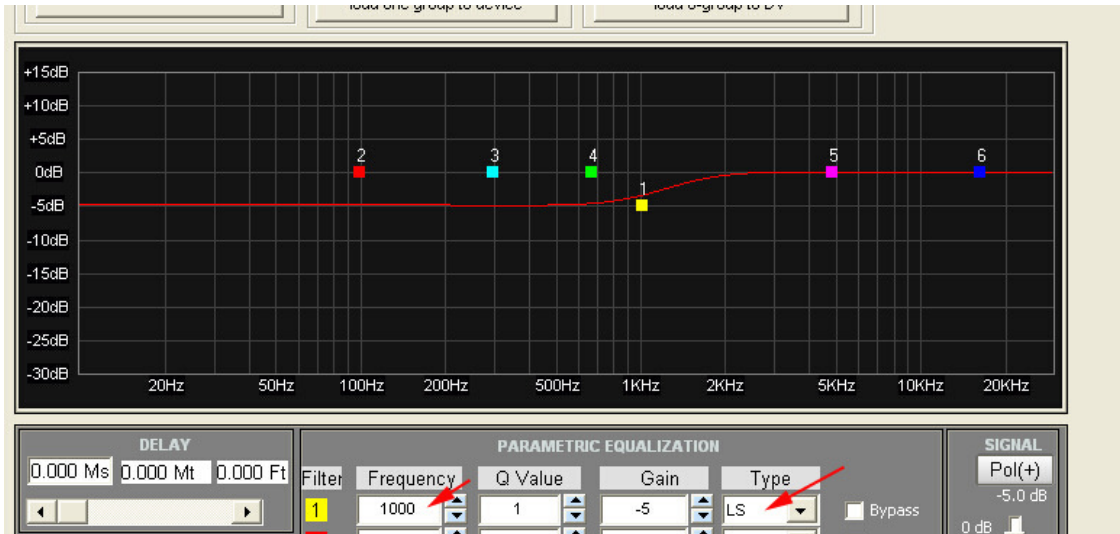
for example



PEQ type for example



HS type for example

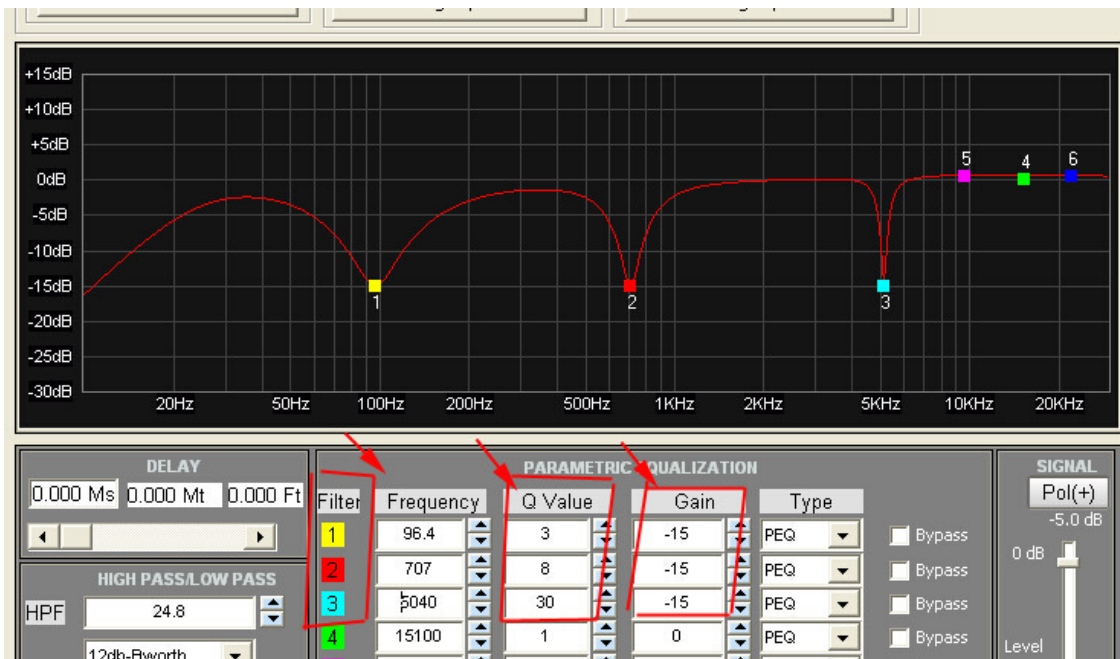


LS type for example

2.How to set up Q Value.

Filter number 1 to 6, and then set up Q Value

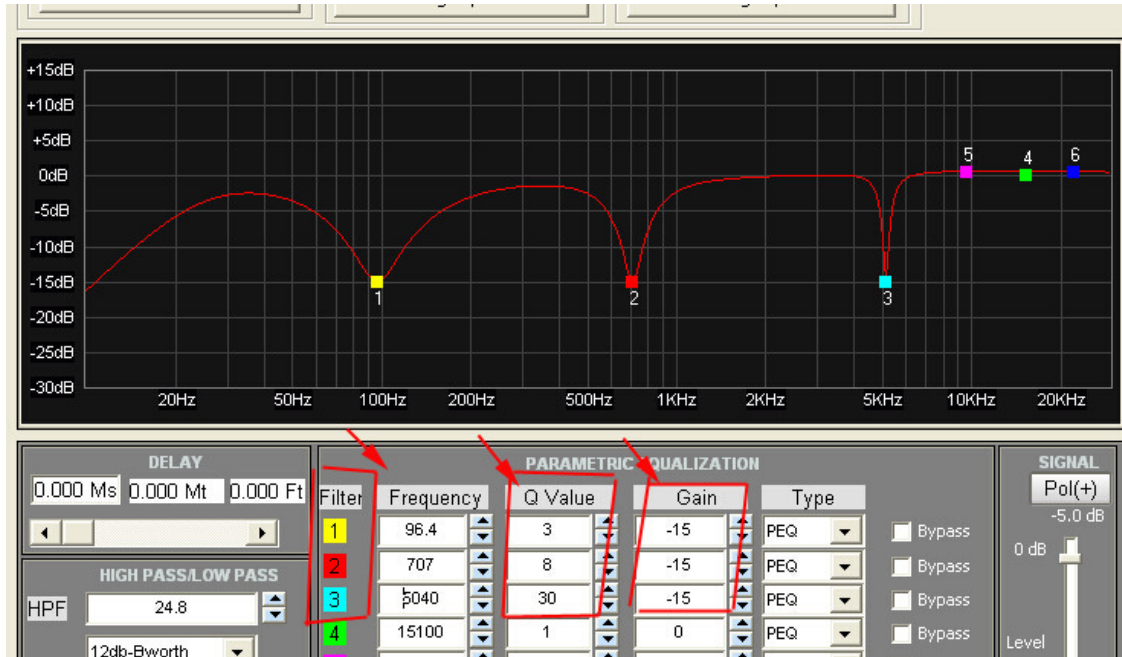
When equalizer Q parameter (Q value) is smaller adjustable frequency is more width. (against Q parameter is bigger the frequency is narrow)



Q Value example

3. adjustment gain

Input what you want parameter, input positive 1, 2, 3...; input negative: -1, -2, -3...("-" is reduction gain)



Gain example for -15

四, computer connected

- 1) First install USB driver 485 software and DSP software. (factory supply)
- 2) Open the software and click "state", connect device.
- 3) When you set new parameter you should save to "user group" for next time use.
- 4) When computer connected with device you can choose eight group mode to use, if disconnect with computer, it will use acquiescence mode.



USB change to RS485 net cable.



Power cable.



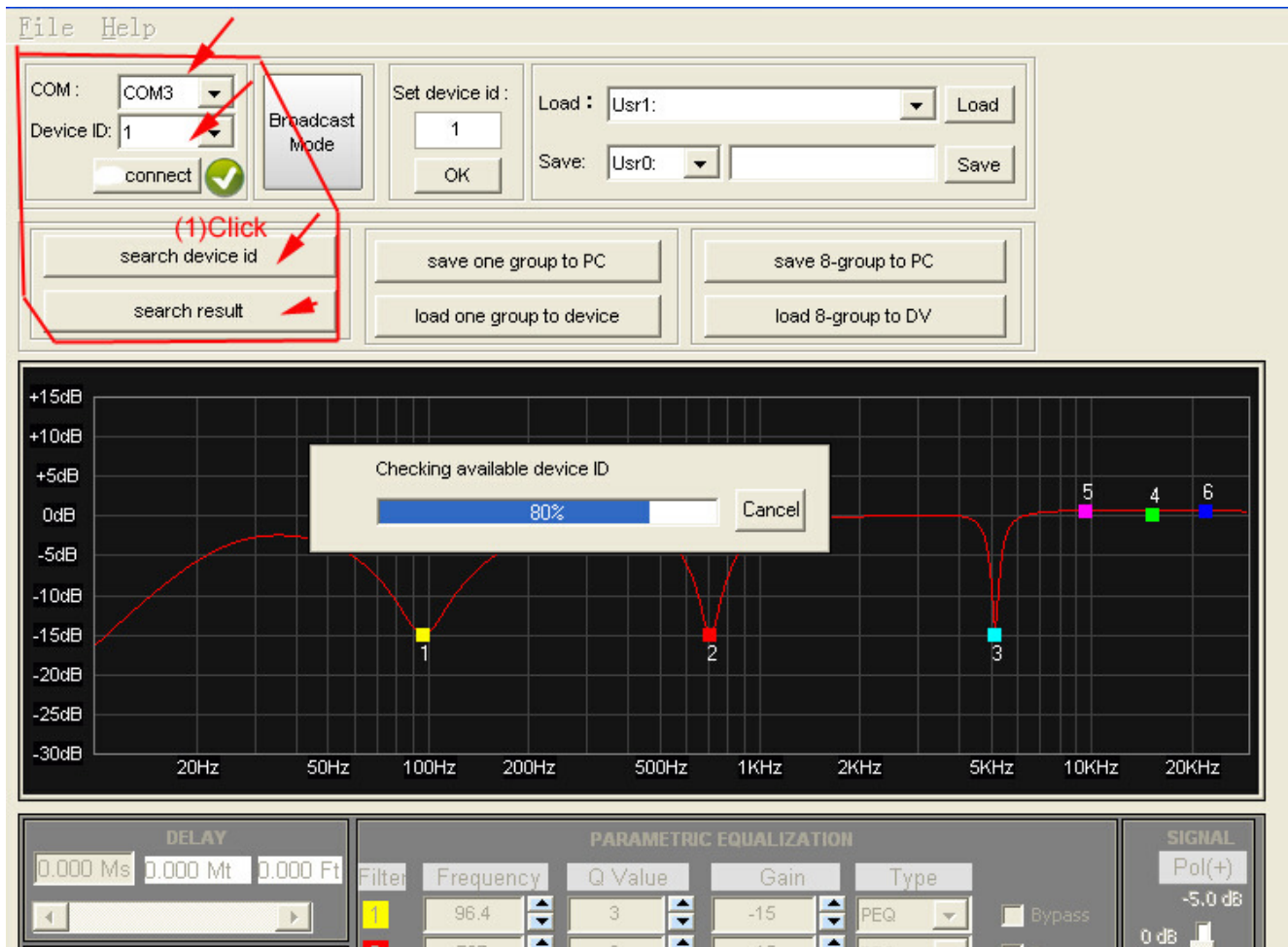
5) SEARCH DEVICE ID

“COM” mean computer USB connect port. “device ID” mean speaker code.
Factory pattern each speaker code is “1”

When use a group of speaker, if not need separate adjust single speaker, that is not need set up “device ID”.

If you want to meantime control a group of speaker or separate control speaker. You should select “broadcast mode”, after choose model and then connect speaker.

If you want to individual control specify speaker that need to each speaker set different “device ID”.



If you need more info please contact us.

ACLON[®]

Professional Sound System

ACLON Audio International Co., Ltd.

RM702,7/F, NO.16, Industry south Road, Haizhu District, Guangzhou, China (Post: 510288)

Tel / Fax: 0086 20 3412 7645

Mobile: 0086 137 1007 3998

E-mail: sales@aclaudio.com

acl-audio@163.com

Web: www.ACLaudio.com

SKYPE: acl-audio

Facebook/ACLONAUDIO